

Components for Modular Storage

Efficient storage: be organized and flexible



/// SCANMODUL®

Medical & Industrial Material Handling

Contents

Introduction	3
Trays, Baskets and Shelves - Quick Overview	4
ABS Baskets & Trays	6
PC Baskets & Trays	10
PPO Trays	14
ABS High Temperature Trays	16
Dividers & Accessories for Baskets & Trays	19
Labeling Systems	22
Medication Organization	26
Laminate Shelves	34
Melamine Shelves	35
Side Panels and Telescopic Runners	42
Storage of Catheters	44



Introduction

Efficient storage: be organized and flexible

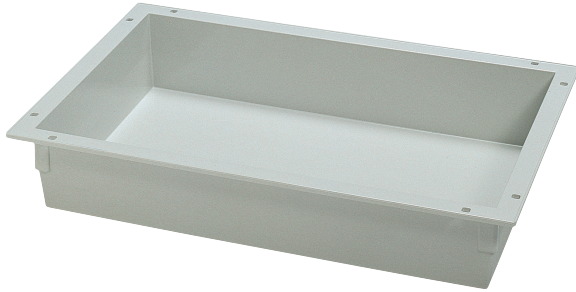
We have developed an ISO certified modular system for trays, baskets and shelves, which optimizes the flow of supplies from central storage to the point-of-use. This allows modules – our common name for trays and baskets – to be moved from one place to another instead of picking each item from shelf to shelf.

In order to optimize your storage even further, a wide range of accessories, labeling solutions, catheter storage options,... are part of the product offering.

Top 5 features trays and baskets

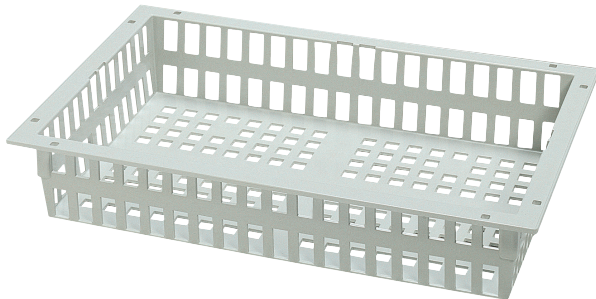
- Our dimensions have become today's ISO standard in healthcare industry
- Pre-perforated for mounting safety stops
- Beaded edge for label holders
- Dividers for creating compartments
- Available in a variety of materials such as ABS, PC, PPO,...

Trays, Baskets and Shelves - Quick Overview



Trays

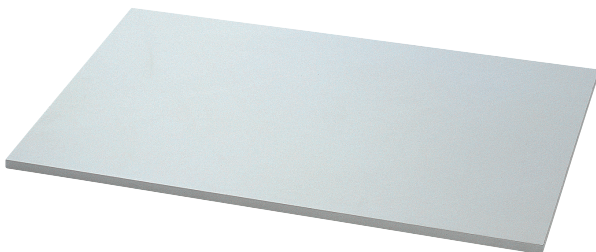
Trays are ideal for those purposes where you need a solid product that can be completely sealed with a lid or when you want to make sure that small items or liquids are contained within the module.



Baskets

Our lightweight baskets have small holes in the sides as well as in the bottom. This enables you to partly see the content without pulling out the module.

They are also available with a closed bottom.



Shelves

We provide shelves in a variety of sizes and materials. Please contact your local sales representative to find the best solution for your needs.

They are suitable, for example, for storing sterile containers or also for cellulose in larger containers.



W $18\frac{3}{16}$ x D $27\frac{51}{64}$ inch



W $27\frac{51}{64}$ x D $18\frac{3}{16}$ inch



W $19\frac{29}{64}$ x D $18\frac{3}{16}$ inch
(half module)



W $18\frac{3}{16}$ x D $19\frac{29}{64}$ inch
(half module)

Four basic dimensions

The use of our modular system is supported in a unique and meaningful way. To make your storage as flexible as possible, we supply most of our trays, baskets and shelves in 4 different basic sizes. In this way, all possible variants of use can be made.

Materials

Most of our trays and baskets are made from grey ABS, which is a sturdy and durable material that withstands cleaning in most washing machines. The green HT ABS baskets withstand a slightly higher temperature. Our high-runner ABS baskets are now also available in **100% recycled ABS**, supporting our sustainability initiatives.

We also have a range of transparent trays and baskets in Polycarbonate and baskets in Stainless Steel which has the big advantage of being autoclavable at high temperatures.

PPO trays are resistant to liquid disinfectants and also particularly suitable for used instruments.

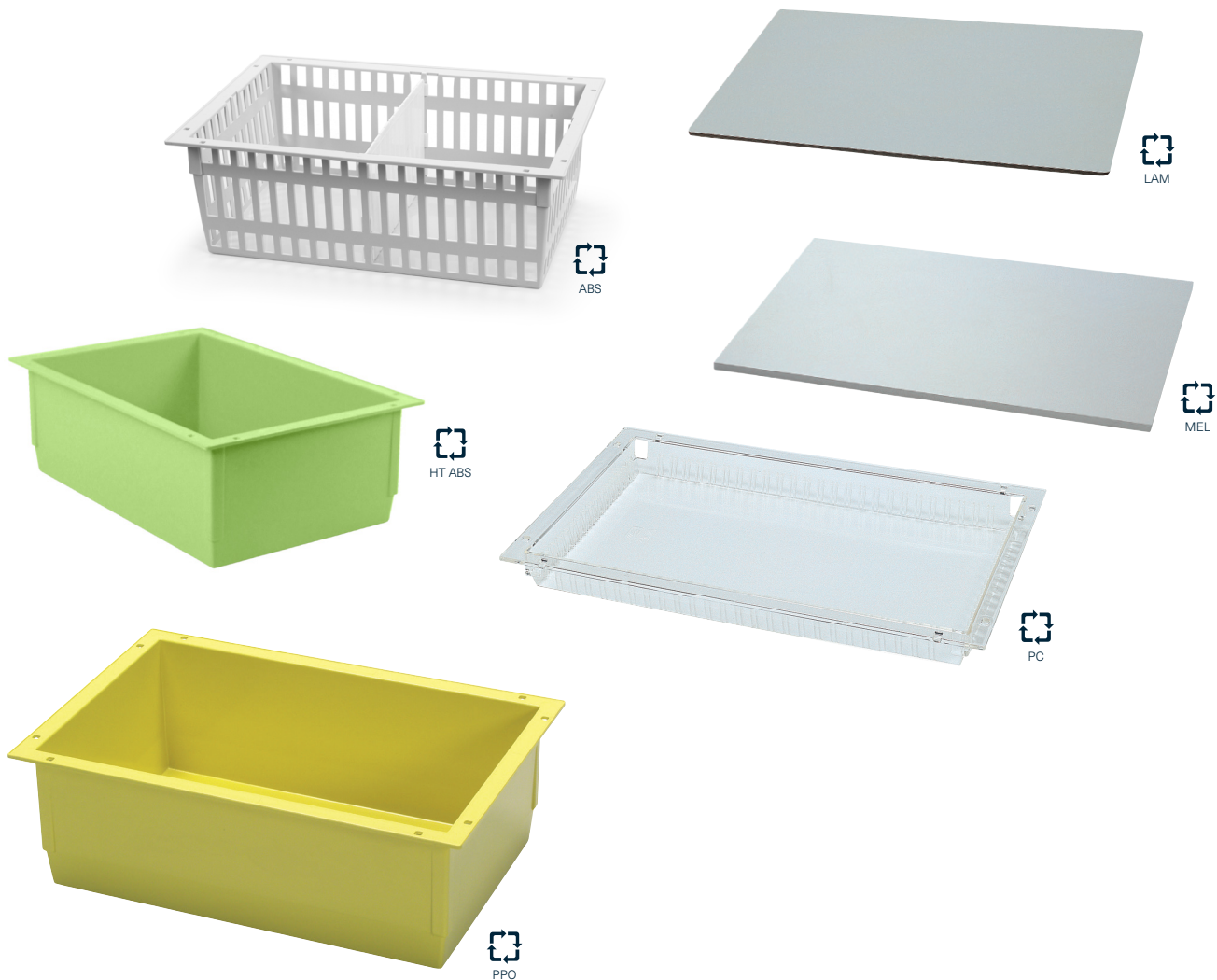
For more information, refer to "Materials Properties" in each section.

Material Properties are obtained from our suppliers.

These must be considered as a guide and no responsibility can be accepted by ScanModul® for errors and omissions.

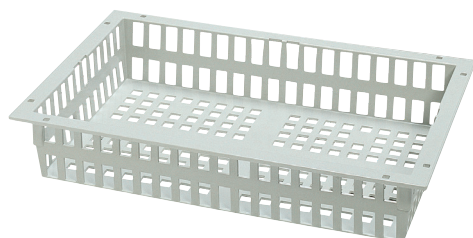
You can obtain further technical information by approaching ScanModul® directly or one of our representatives.

Avoid high temperatures and longer delays in washing machines than suggested.



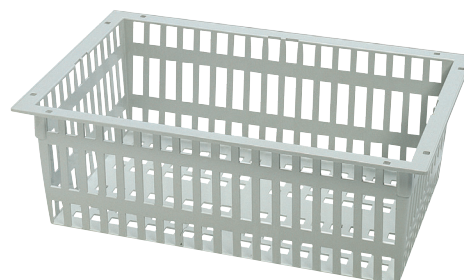
ABS Baskets & Trays

ABS Baskets - dividable



Full size, 3^{15/16} inch high

Dimensions	Item no.
23 ^{5/8} x 15 ^{3/4} x 3 ^{15/16} inch	2364251
23 ^{5/8} x 15 ^{3/4} x 3 ^{15/16} inch - Recycled ABS basket	2364251R



Full size, 7^{7/8} inch high

Dimensions	Item no.
23 ^{5/8} x 15 ^{3/4} x 7 ^{7/8} inch	2364252
23 ^{5/8} x 15 ^{3/4} x 7 ^{7/8} inch - Recycled ABS basket	2364252R



Half size, 3^{15/16} inch high

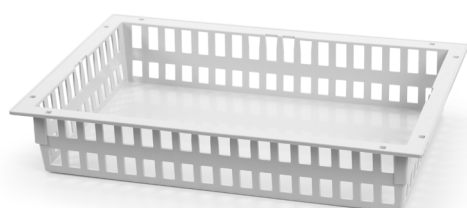
Dimensions	Item no.
11 ^{13/16} x 15 ^{3/4} x 3 ^{15/16} inch	2334251



Half size, 7^{7/8} inch high

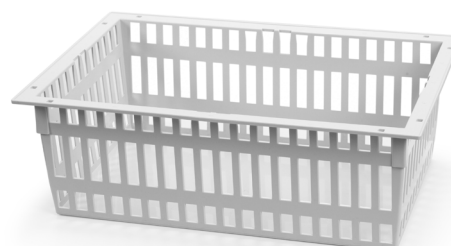
Dimensions	Item no.
11 ^{13/16} x 15 ^{3/4} x 7 ^{7/8} inch	2334252

ABS Baskets - Closed Bottom - dividable



Full size, 3^{15/16} inch high

Dimensions	Item no.
23 ^{5/8} x 15 ^{3/4} x 3 ^{15/16} inch, grey	2364281



Full size, 7^{7/8} inch high

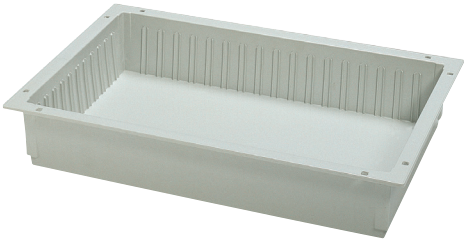
Dimensions	Item no.
23 ^{5/8} x 15 ^{3/4} x 7 ^{7/8} inch, grey	2364282

ABS Trays - dividable



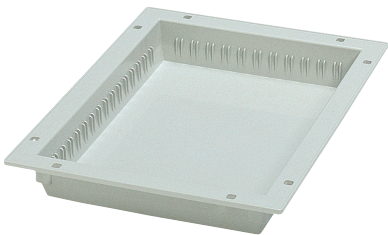
Full size, 1 31/32 inch high

Dimensions	Item no.
23 5/8 x 15 3/4 x 1 31/32 inch	2064206



Full size, 3 15/16 inch high

Dimensions	Item no.
23 5/8 x 15 3/4 x 3 15/16 inch	2064211



Half size, 1 31/32 inch high

Dimensions	Item no.
11 13/16 x 15 3/4 x 1 31/32 inch	2034206



Acrylnitrile-butadiene-styrene

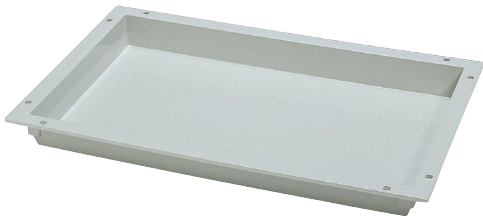
Material Properties:
Rigid, durable and impact resistant.
A smooth surface finish and structurally stable.

Temperature:
Max. continuous + 158 °F
Max. short-term. + 194 °F

Chemical tolerance:
Withstands some weak acid, bases, oil and fats.
Avoid solvents.

Cleaning:
In automatic washing machines and with most
common detergents and disinfectants on the market.

ABS Trays - non-dividable



Full size, 1 ³¹/₃₂ inch high

Dimensions	Item no.
23 ⁵ / ₈ x 15 ³ / ₄ x 1 ³¹ / ₃₂ inch	2064205



Full size, 3 ¹⁵/₁₆ inch high

Dimensions	Item no.
23 ⁵ / ₈ x 15 ³ / ₄ x 3 ¹⁵ / ₁₆ inch	2064210



Full size, 7 ⁷/₈ inch high

Dimensions	Item no.
23 ⁵ / ₈ x 15 ³ / ₄ x 7 ⁷ / ₈ inch	2064220



Full size, 11 ¹/₃₂ inch high

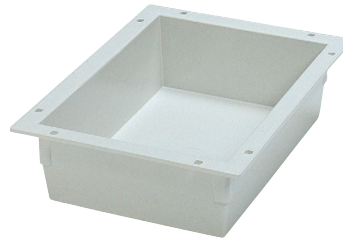
Dimensions	Item no.
23 ⁵ / ₈ x 15 ³ / ₄ x 11 ¹ / ₃₂ inch	2064228

ABS Trays - non-dividable



Half size, 1 ³¹/₃₂ inch high

Dimensions	Item no.
11 ¹³ / ₁₆ x 15 ³ / ₄ x 1 ³¹ / ₃₂ inch	2034205



Half size, 3 ¹⁵/₁₆ inch high

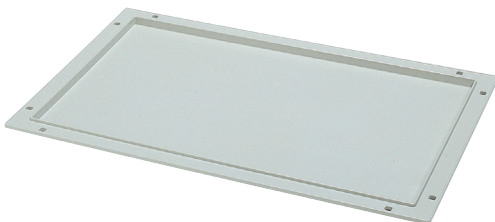
Dimensions	Item no.
11 ¹³ / ₁₆ x 15 ³ / ₄ x 3 ¹⁵ / ₁₆ inch	2034210



Half size, 7 ⁷/₈ inch high

Dimensions	Item no.
11 ¹³ / ₁₆ x 15 ³ / ₄ x 7 ⁷ / ₈ inch	2034220

ABS-Lid for Baskets & Trays



Full size, 0 ¹⁹/₃₂ inch high

Dimensions	Item no.
23 ⁵ / ₈ x 15 ³ / ₄ x 0 ¹⁹ / ₃₂ inch	2064201



Half size, 0 ¹⁹/₃₂ inch high

Dimensions	Item no.
11 ¹³ / ₁₆ x 15 ³ / ₄ x 0 ¹⁹ / ₃₂ inch	2034201

PC Baskets & Trays

PC Baskets - dividable



Full size, 3 ¹⁵/₁₆ inch high

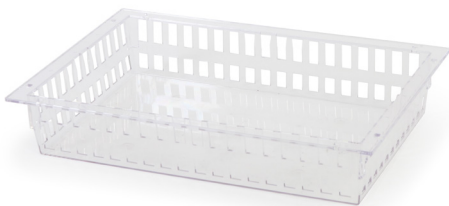
Dimensions	Item no.
23 ⁵ / ₈ x 15 ³ / ₄ x 3 ¹⁵ / ₁₆ inch	2364451



Full size, 7 ⁷/₈ inch high

Dimensions	Item no.
23 ⁵ / ₈ x 15 ³ / ₄ x 7 ⁷ / ₈ inch	2364452

PC Baskets - Closed Bottom - dividable



Full size, 3 ¹⁵/₁₆ inch high

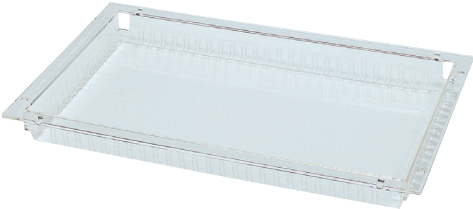
Dimensions	Item no.
23 ⁵ / ₈ x 15 ³ / ₄ x 3 ¹⁵ / ₁₆ inch, grey	2364481



Full size, 7 ⁷/₈ inch high

Dimensions	Item no.
23 ⁵ / ₈ x 15 ³ / ₄ x 7 ⁷ / ₈ inch, grey	2364482

PC Trays - dividable



Full size, 1 ³¹/₃₂ inch high

Dimensions	Item no.
23 ⁵ / ₈ x 15 ³ / ₄ x 1 ³¹ / ₃₂ inch	2064407



Full size, 3 ¹⁵/₁₆ inch high

Dimensions	Item no.
23 ⁵ / ₈ x 15 ³ / ₄ x 3 ¹⁵ / ₁₆ inch	2064412



Half size, 1 ³¹/₃₂ inch high

Dimensions	Item no.
11 ¹³ / ₁₆ x 15 ³ / ₄ x 1 ³¹ / ₃₂ inch	2034407



Polycarbonate

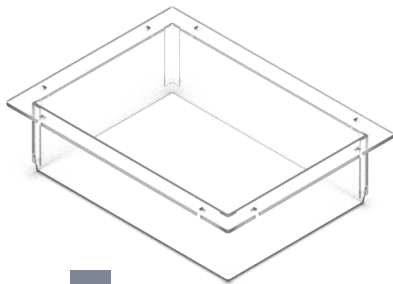
Material Properties:
Stiff, durable. Highly impact resistant.
Virtually unbreakable. Autoclaveable.

Temperature:
Max. continuous + 257 °F
Max. short-term. + 284 °F

Chemical tolerance:
Resistant against oils and fats.
Poor towards strong acids and bases.

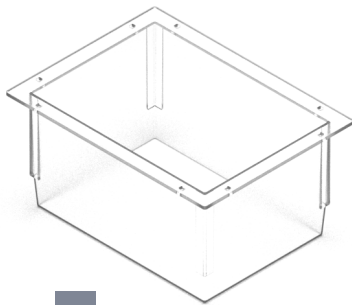
Cleaning:
In automatic washing machines and with most
common detergents and disinfectants on the market.

PC Trays non-dividable



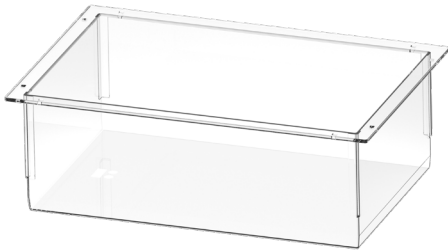
Half size, 3 ¹⁵/₁₆ inch high

Dimensions	Item no.
11 ¹³ / ₁₆ x 15 ³ / ₄ x 3 ¹⁵ / ₁₆ inch	2034410



Half size, 7 ⁷/₈ inch high

Dimensions	Item no.
11 ¹³ / ₁₆ x 15 ³ / ₄ x 7 ⁷ / ₈ inch	2034420



Full size, 7 ⁷/₈ inch high

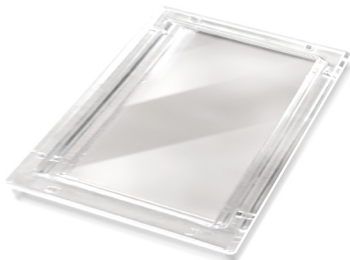
Dimensions	Item no.
23 ⁵ / ₈ x 15 ³ / ₄ x 7 ⁷ / ₈ inch	2064420

PC Lids for Baskets & Trays



Full size, 0 ¹⁹/₃₂ inch high

Dimensions	Item no.
23 ⁵ / ₈ x 15 ³ / ₄ x 0 ¹⁹ / ₃₂ inch	2064408



Half size, 0 ¹⁹/₃₂ inch high

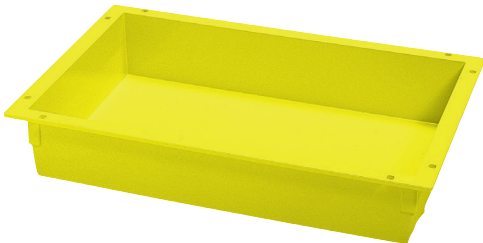
Dimensions	Item no.
11 ¹³ / ₁₆ x 15 ³ / ₄ x 0 ¹⁹ / ₃₂ inch	2034401



PPO Trays

These trays have been specially designed for the transport of soiled instruments and liquid disinfectants. They can be fitted with a lid.

PPO Trays - non-dividable



$M > a \quad b$

Full size, 3 ¹⁵/₁₆ inch high

Dimensions	Item no.
23 ⁵ / ₈ x 15 ³ / ₄ x 3 ¹⁵ / ₁₆ inch	2064610



$M > a \quad b$

Full size, 7 ⁷/₈ inch high

Dimensions	Item no.
23 ⁵ / ₈ x 15 ³ / ₄ x 7 ⁷ / ₈ inch	2064620



$M > a \quad b$

Full size, 11 ¹/₃₂ inch high

Dimensions	Item no.
23 ⁵ / ₈ x 15 ³ / ₄ x 11 ¹ / ₃₂ inch	2064628



$\frac{M}{2} > a \quad c \quad d$

Half size, 3 ¹⁵/₁₆ inch high

Dimensions	Item no.
11 ¹³ / ₁₆ x 15 ³ / ₄ x 3 ¹⁵ / ₁₆ inch	2034311



$\frac{M}{2} > a \quad c \quad d$

Half size, 7 ⁷/₈ inch high

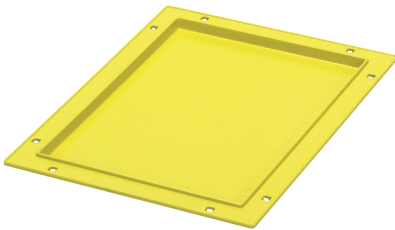
Dimensions	Item no.
11 ¹³ / ₁₆ x 15 ³ / ₄ x 7 ⁷ / ₈ inch	2034321

PPO Lids



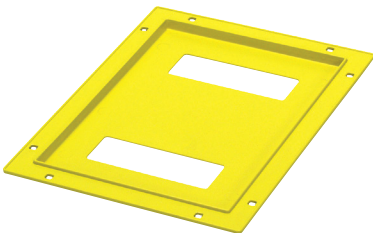
Full size, 0 ¹⁹/₃₂ inch high

Dimensions	Item no.
23 ⁵ / ₈ x 15 ³ / ₄ x 0 ¹⁹ / ₃₂ inch For PPO trays only	2064302



Half size, 0 ¹⁹/₃₂ inch high

Dimensions	Item no.
11 ¹³ / ₁₆ x 15 ³ / ₄ x 0 ¹⁹ / ₃₂ inch For PPO trays only	2034302



Half size, 0 ²⁵/₆₄ inch high

Dimensions	Item no.
11 ¹³ / ₁₆ x 15 ³ / ₄ x 0 ²⁵ / ₆₄ inch For PPO trays only	2034303



PPO

Polyphenylenoxide

Material Properties:

Abrasion resistant, durable and hard, structurally stable.

Temperature:

Max. continuous + 230 °F
Max. short-term. + 248 °F

Chemical tolerance:

Withstands weak acid and bases.
Avoid solvents.

Cleaning:

In automatic washing machines* and with most common detergents and disinfectants on the market.

ABS High Temperature Trays

Several countries globally have sharpened the demands on the disinfection of trays.

Where continuous washing from 158–185 °F and short term at 90 degrees was previously the norm, now new guidelines state, that trays should be disinfected up to at 199–203 °F, to ensure a higher level of cleanliness. Regular grey ABS baskets are not able to withstand washing cycles with temperatures above 185 °F for a longer period of time, leaving CSSD departments unequipped to meet the new standards. These ABS High Temperature trays, can resist temperatures of up to 207 °F, making them completely future proof.

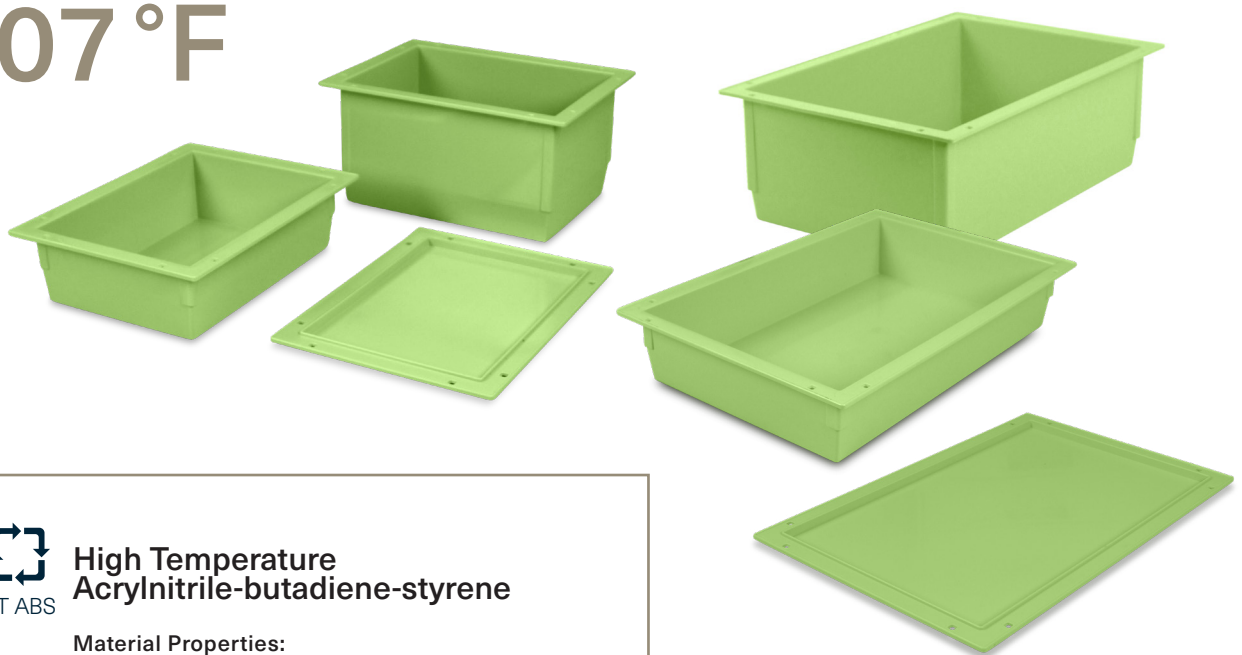
The vibrant green colour makes them stand out from other trays, and easy to recognise.

Features

- Heat resistant and washable up to 207 °F
- Perfect cleanliness
- High quality
- Future proof
- ISO modular
- Vibrant green

Heat resistant and washable up to

207 °F



HT ABS

High Temperature Acrylnitrile-butadiene-styrene

Material Properties:

Rigid, durable and impact resistant.
A smooth surface finish and structurally stable.

Temperature:

Max. continuous + 207 °F

Chemical tolerance:

Withstands some weak acid, bases, oil and fats.
Avoid solvents.

Cleaning:

In automatic washing machines and with most common detergents and disinfectants on the market.

ABS HT Trays - Non-dividable



Full size, 1 ³¹/₃₂ inch high

Dimensions	Item no.
23 ⁵ / ₈ x 15 ³ / ₄ x 1 ³¹ / ₃₂ inch	2064805



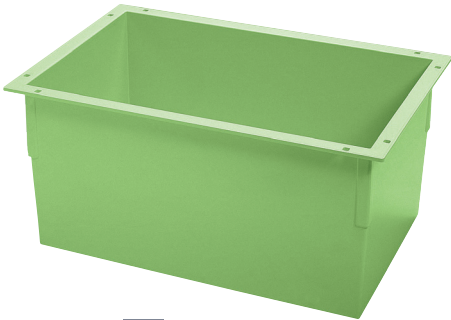
Full size, 3 ¹⁵/₁₆ inch high

Dimensions	Item no.
23 ⁵ / ₈ x 15 ³ / ₄ x 3 ¹⁵ / ₁₆ inch	2064810



Full size, 7 ⁷/₈ inch high

Dimensions	Item no.
23 ⁵ / ₈ x 15 ³ / ₄ x 7 ⁷ / ₈ inch	2064820



Full size, 11 ¹/₃₂ inch high

Dimensions	Item no.
23 ⁵ / ₈ x 15 ³ / ₄ x 11 ¹ / ₃₂ inch	2064828



Half size, 3 ¹⁵/₁₆ inch high

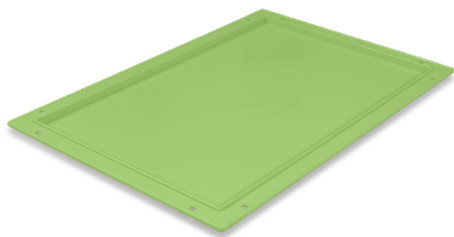
Dimensions	Item no.
11 ¹³ / ₁₆ x 15 ³ / ₄ x 3 ¹⁵ / ₁₆ inch	2034810



Half size, 7 ⁷/₈ inch high

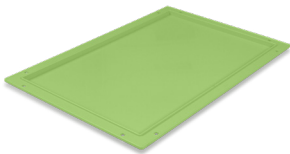
Dimensions	Item no.
11 ¹³ / ₁₆ x 15 ³ / ₄ x 7 ⁷ / ₈ inch	2034820

ABS HT Lids



Full size, 0^{19/32} inch high

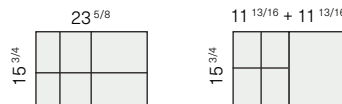
Dimensions	Item no.
23 ^{5/8} x 15 ^{3/4} x 0 ^{19/32} inch For ABS HT Trays only	2064801



Half size, 0^{19/32} inch high

Dimensions	Item no.
11 ^{13/16} x 15 ^{3/4} x 0 ^{19/32} inch For ABS HT Trays only	2034801

Dividers & Accessories for Baskets & Trays

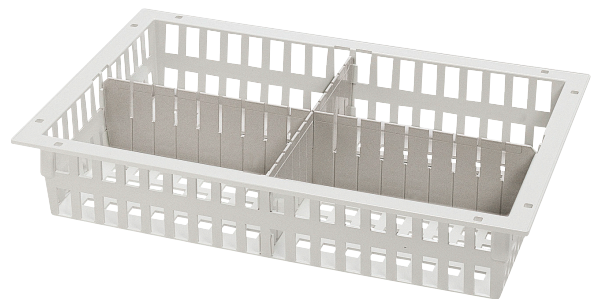





Dividability ensures flexibility

To ensure the possibility of optimal storage of different and/or smaller items, all our plastic baskets and many trays can be subdivided. This makes handling much easier and clearer. Articles can be removed quickly and easily without mixing.



Dividers for Baskets & Trays



Description		Dimensions	Item no.
Divider in ABS	 ABS	11 13/16 x 3 15/16 inch	2364257
		15 3/4 x 3 15/16 inch, grey	2364253C
		23 5/8 x 3 15/16 inch, grey	2364254C
		15 3/4 x 7 7/8 inch, grey	2364255C
		23 5/8 x 7 7/8 inch, grey	2364256C
Divider in PC	 PC	15 3/4 x 3 15/16 inch	2364453C
		23 5/8 x 3 15/16 inch	2364454C
		15 3/4 x 7 7/8 inch	2364455C
		23 5/8 x 7 7/8 inch	2364456C
Divider in PMMA	 PMMA	11 13/16 x 1 31/32 inch	2064269
		15 3/4 x 1 31/32 inch	2064270
		23 5/8 x 1 31/32 inch	2064271

Accessories for Baskets & Trays



Safety stops

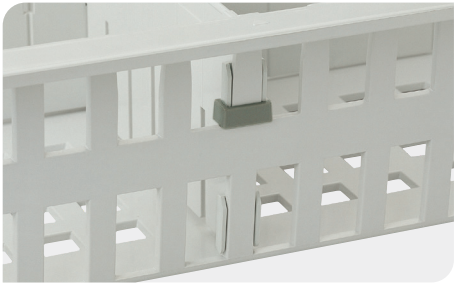
Description	Item no.
Safety stops for baskets, 2 parts, blue. Are used to prevent modules from falling when they are fully extended out of cabinets, racks or trolleys. To be used with ScanModul® side-panels. 2 safety stops per basket or tray required	1961870



T-piece

Description	Item no.
Holder to secure smaller "snapped off" sections of partitions, blue.	2064266

Accessories for Baskets & Trays



Partition lock

Description	Item no.
Fixation for divider, grey	2364259



Security clips and sealing arrows

Description	Item no.
Security clips for boxes and lids, blue, ABS	1964680
Sealing arrow, red	1964675
Sealing arrow, blue	1964676



Wall suspension rails

Description	Item no.
23 5/8 inch for 3 15/16 inch high modules, powder coated steel, blue. For suspending at an angle	2064290
23 5/8 inch for 3 15/16 inch high modules, powder coated steel, blue. For suspending horizontally	2064292

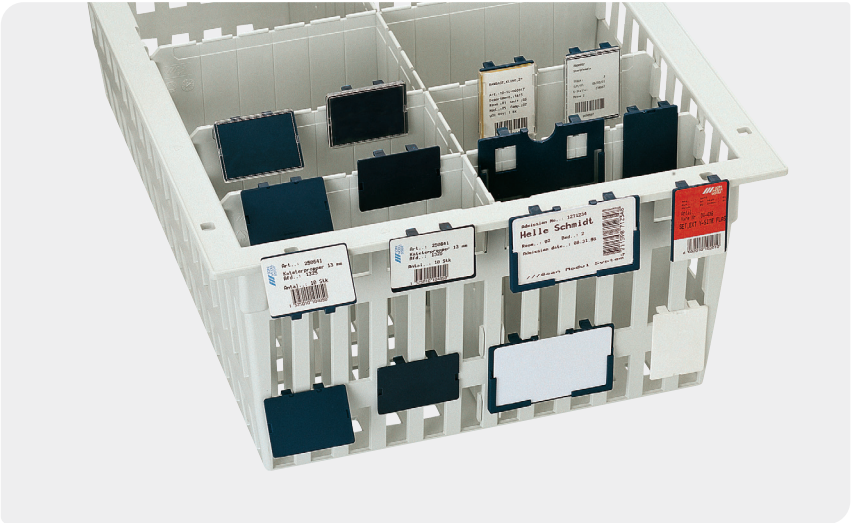


Locking label plate

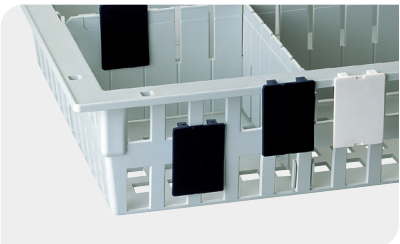
Description	Item no.
Plate for locking and labeling of box and lid. Stainless steel, 3 5/32 x 2 9/16 x 0 63/64 inch. Breaking seal not included.	1964806

Labeling Systems

With the labeling system the stored products can be clearly marked. The labels can be fixed on all modules, baskets and dividers at each stage of the supply circuit.

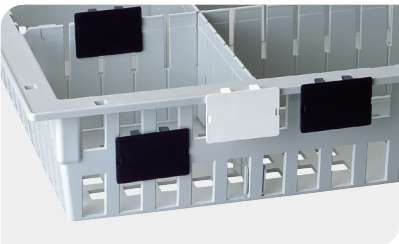


Label holders



Label holder without cover, vertical

Description	Item no.
Max label size of 2 1/4 x 1 1/2 inch blue	1961790
Max label size of 2 1/4 x 1 1/2 inch white	1961700
Max label size of 2 1/4 x 1 1/2 inch transparant PP	1961800



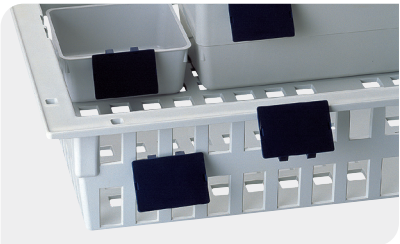
Label holder without cover, horizontal

Description	Item no.
Max label size of 2 1/4 x 1 1/2 inch blue	1961795
Max label size of 2 1/4 x 1 1/2 inch white	1961705
Max label size of 2 1/4 x 1 1/2 inch black	1961796
Max label size of 2 1/4 x 1 1/2 inch yellow	1961797



Label holder with insertion slot for labels in credit-card size

Description	Item no.
Blue label holder	1961810
Related labels, credit-card size	
3 11/32 x 2 1/8 inch red	1961811
3 11/32 x 2 1/8 inch blue	1961812
3 11/32 x 2 1/8 inch green	1961813
3 11/32 x 2 1/8 inch white	1961814
3 11/32 x 2 1/8 inch yellow	1961817
3 11/32 x 2 1/8 inch cover clear	1961816



Label holder without cover, angled pos.

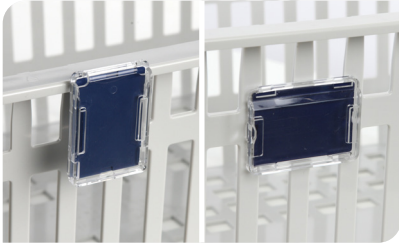
Description	Item no.
Max label size of 2 1/4 x 1 1/2 inch blue	1961805



Sheetholder

Description	Item no.
DIN A4, self-adhesive	9019050
DIN A3, self-adhesive	9019051
DIN A4, magnetic	9019052
DIN A5, magnetic	9019053

Labeling accessories



PC

Single pocket label holder

Description	Item no.
Vertical single pocket label holder	1961807
Horizontal single pocket label holder	1961809



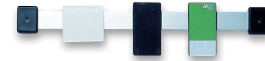
PC

Transparent cover for label holder

Description	Item no.
Transparent cover	1961804

For labels in max. size 2 1/4 x 1 1/2 inch

Related card for label holder	Item no.
2 21/64 x 1 1/2 x 0 13/64 inch, white	1961825



a

b



ALU

Alu-profile for label holders

Description	Item no.
Alu-profile for label holders, 13 31/32 inch, for A-Type cabinets	1964857
Alu-profile for label holders, 21 27/32 inch, for B-Type cabinets	1964858
End stop for clip holder	1964851
Center support recommended, when length is more than 39 3/8 inch	1964852

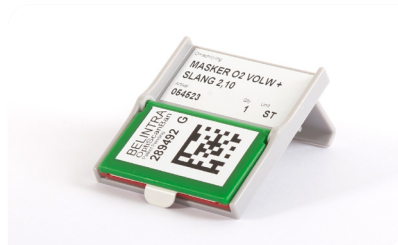
Any other length on request.



PVC

Adhesive holder for cards

Description	Item no.
Length 12 63/64 inch, height 1 7/64 inch, for cabinet widths up to 15 3/4 inch	1961821
Length 21 21/32 inch, height 1 7/64 inch, for cabinet widths up to 23 5/8 inch	1961822
Length 39 3/8 inch, height 1 7/64 inch	1961824



ABS

Belintra OptiScanBan® label holder for baskets

Description	Item no.
2 23/64 x 2 3/4 x 1 31/32 inch	15008 00049

SCANslide system



Clip-on-version

Dimensions	Item no.
18 ^{11/32} x 12 ^{21/64} x 3 ^{17/64} inch	1961840



Self adhesive

Dimensions	Item no.
1 ^{39/64} x 1 ^{17/64} x 0 ^{15/64} inch	1961841

Color identification handles



Handles for trays and baskets, 15^{3/4} inch

Dimensions	Item no.
15 ^{3/4} inch grey	1961880
15 ^{3/4} inch dark blue	1961881
15 ^{3/4} inch yellow	1961882
15 ^{3/4} inch red	1961883
15 ^{3/4} inch green	1961884
15 ^{3/4} inch light blue	1961885



Handles for trays and baskets, 23^{5/8} inch

Dimensions	Item no.
23 ^{5/8} inch grey	1961890
23 ^{5/8} inch dark blue	1961891
23 ^{5/8} inch yellow	1961892
23 ^{5/8} inch red	1961893
23 ^{5/8} inch green	1961894
23 ^{5/8} inch light blue	1961895

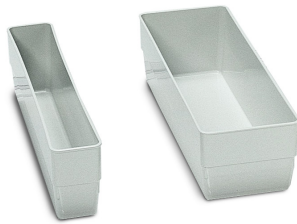


Handles on modules to be inserted in either ScanCell® trolleys, open steel trolleys, transport trolleys or cabinets.

Medication Organization

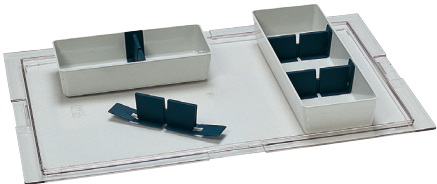
The inserts are available in various sizes. Instruments and other items can be stored in their own individual inserts, depending on their sizes, which prevents them from getting mixed up with other items. The inserts can be removed individually, which allows for quick and easy removal. Just like the modules, the inserts are temperature-resistant up to + 70 °, briefly up to + 90 °.

Modular Inserts



Dimensions	Item no.	Item no. of corresponding dividers
1 ³¹ / ₃₂ x 1 ³¹ / ₃₂ x 1 ⁴⁹ / ₆₄ inch, light grey	2162202	
3 ¹⁵ / ₁₆ x 1 ³¹ / ₃₂ x 1 ⁴⁹ / ₆₄ inch, light grey	2162204	
4 ²³ / ₃₂ x 4 ²¹ / ₆₄ x 1 ³¹ / ₃₂ inch, light grey	2162210	2162207
6 ¹¹ / ₁₆ x 2 ⁶¹ / ₆₄ x 1 ³¹ / ₃₂ inch, light grey	2162206	2162205
9 ²⁹ / ₆₄ x 2 ¹¹ / ₆₄ x 1 ³¹ / ₃₂ inch, light grey	2162220	
9 ²⁹ / ₆₄ x 4 ²¹ / ₆₄ x 1 ³¹ / ₃₂ inch, light grey	2162212	2162207
9 ²⁹ / ₆₄ x 4 ²¹ / ₆₄ x 1 ³¹ / ₃₂ inch, yellow	2162212G	2162207
9 ²⁹ / ₆₄ x 2 ¹¹ / ₆₄ x 3 ¹⁵ / ₁₆ inch, light grey	2162222	
9 ²⁹ / ₆₄ x 4 ²¹ / ₆₄ x 3 ¹⁵ / ₁₆ inch, light grey	2162218	2162207
9 ²⁹ / ₆₄ x 4 ²¹ / ₆₄ x 3 ¹⁵ / ₁₆ inch, yellow	2162218G	2162207
13 ²⁵ / ₆₄ x 2 ¹¹ / ₆₄ x 1 ³¹ / ₃₂ inch, light grey	2162228	
13 ²⁵ / ₆₄ x 4 ²¹ / ₆₄ x 1 ³¹ / ₃₂ inch, light grey	2162224	2162207
13 ²⁵ / ₆₄ x 2 ¹¹ / ₆₄ x 3 ¹⁵ / ₁₆ inch, light grey	2162230	
13 ²⁵ / ₆₄ x 4 ²¹ / ₆₄ x 3 ¹⁵ / ₁₆ inch, light grey	2162226	2162207
21 ²¹ / ₃₂ x 4 ²¹ / ₆₄ x 1 ³¹ / ₃₂ inch, light grey	2162242	2162207
21 ²¹ / ₃₂ x 2 ¹¹ / ₆₄ x 2 ³ / ₄ inch, light grey	2162240	
33 ¹⁵ / ₃₂ x 4 ²¹ / ₆₄ x 1 ³¹ / ₃₂ inch, light grey	2162244	2162207

Accessories for modular inserts



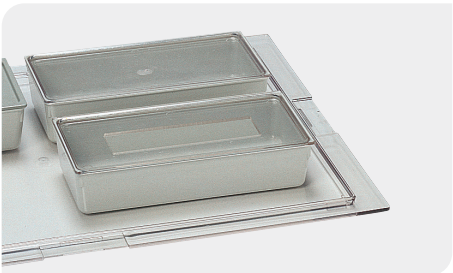
Partitions for inserts

Dimensions	Item no.
4 ²¹ / ₆₄ inch width	2162207



Partitions for inserts

Dimensions	Item no.
2 ³ / ₄ inch width	2162205



PC-Transparent lids for inserts

Dimensions	Item no.
9 ²⁹ / ₆₄ x 4 ²³ / ₃₂ inch	2162215
9 ²⁹ / ₆₄ x 4 ²³ / ₃₂ inch with cut out	2162215F

Preconfigured ABS Trays with Inserts



Full size, 1 ³¹/₃₂ inch high

Dimensions	Item no.
23 ⁵ / ₈ x 15 ³ / ₄ x 1 ³¹ / ₃₂ inch 9 x Insert 13 ²⁵ / ₆₄ x 2 ¹¹ / ₆₄ x 1 ³¹ / ₃₂ inch	SM-SUB-01



Full size, 1 ³¹/₃₂ inch high

Dimensions	Item no.
23 ⁵ / ₈ x 15 ³ / ₄ x 1 ³¹ / ₃₂ inch 6 x Insert 9 ²⁹ / ₆₄ x 4 ²¹ / ₆₄ x 1 ³¹ / ₃₂ inch 1 x Insert 13 ²⁵ / ₆₄ x 2 ¹¹ / ₆₄ x 1 ³¹ / ₃₂ inch	SM-SUB-02



Full size, 1 ³¹/₃₂ inch high

Dimensions	Item no.
23 ⁵ / ₈ x 15 ³ / ₄ x 1 ³¹ / ₃₂ inch 12 x Insert 9 ²⁹ / ₆₄ x 2 ¹¹ / ₆₄ x 1 ³¹ / ₃₂ inch 1 x Insert 13 ²⁵ / ₆₄ x 2 ¹¹ / ₆₄ x 1 ³¹ / ₃₂ inch	SM-SUB-03



Full size, 3 ¹⁵/₁₆ inch high

Dimensions	Item no.
23 ⁵ / ₈ x 15 ³ / ₄ x 3 ¹⁵ / ₁₆ inch 4 x Insert 13 ²⁵ / ₆₄ x 4 ²¹ / ₆₄ x 3 ¹⁵ / ₁₆ inch 1 x Insert 13 ²⁵ / ₆₄ x 2 ¹¹ / ₆₄ x 3 ¹⁵ / ₁₆ inch	SM-SUB-04



Full size, 1 ³¹/₃₂ inch high

Dimensions	Item no.
23 ⁵ / ₈ x 15 ³ / ₄ x 1 ³¹ / ₃₂ inch 3 x Insert 21 ²¹ / ₃₂ x 4 ²¹ / ₆₄ x 1 ³¹ / ₃₂ inch	SM-SUB-05



Full size, 1 ³¹/₃₂ inch high

Dimensions	Item no.
23 ⁵ / ₈ x 15 ³ / ₄ x 1 ³¹ / ₃₂ inch 12 x Insert 4 ²³ / ₃₂ x 4 ²¹ / ₆₄ x 1 ³¹ / ₃₂ inch 1 x Insert 13 ²⁵ / ₆₄ x 2 ¹¹ / ₆₄ x 1 ³¹ / ₃₂ inch	SM-SUB-06

Preconfigured ABS Trays with Inserts



Full size, 1 31/32 inch high

Dimensions	Item no.
23 5/8 x 15 3/4 x 1 31/32 inch	SM-SUB-07
6 x Insert 21 21/32 x 2 11/64 x 2 3/4 inch	



Full size, 1 31/32 inch high

Dimensions	Item no.
23 5/8 x 15 3/4 x 1 31/32 inch	SM-SUB-08
1 x Insert 13 25/64 x 2 11/64 x 1 31/32 inch	
8 x Insert 9 29/64 x 2 11/64 x 1 31/32 inch	
2 x Insert 9 29/64 x 4 21/64 x 1 31/32 inch	



Preconfigured Trays for Medication



Full size, 1 31/32 inch high

Description	Item no.
Tray 23 5/8 x 15 3/4 x 1 31/32 inch Transparent insert with 20 compartments. Each has 4 recessed holes for medicine cups.	2862734



Half size, 1 31/32 inch high

Description	Item no.
Tray 11 13/16 x 15 3/4 x 1 31/32 inch Transparent insert with 8 compartments. Each compartment has 4 recessed holes for medicine cups.	2862704



Half size, 1 31/32 inch high

Description	Item no.
Tray 11 13/16 x 15 3/4 x 1 31/32 inch Transparent insert with 15 compartments.	2862700

Trays with slots for modular inserts



M > a b

Full size tray with slots for 4 module inserts, 1 31/32 inch high

Description	Item no.
Tray with slots for 4 module inserts, 23 5/8 x 15 3/4 x 1 31/32 inch	2862720
Module insert, 13 25/64 x 4 21/64 x 1 31/32 inch	2162224
Module insert, 13 25/64 x 4 21/64 x 3 15/16 inch	2162226
Partition for module insert, 4 21/64 inch	2162207
Blue labelholder, credit card size	1961810
White label, credit card size	1961814



M > a b

Full size tray slots for 14 module inserts, 1 31/32 inch high

Description	Item no.
Tray with slots for 14 module inserts, 23 5/8 x 15 3/4 x 1 31/32 inch	2862722
Module insert, 6 11/16 x 2 61/64 x 1 31/32 inch	2162206
Partition for module insert, 2 3/4 inch	2162205
Horizontal blue labelholder	1961795
Vertical blue labelholder	1961790

Tray with lid for medication transport



M > a b

Full size tray with lid for medication transport, 7 7/8 inch high

Description	Item no.
Tray 23 5/8 x 15 3/4 x 7 7/8 inch	2064220
Lid 23 5/8 x 15 3/4 x 7 7/8 inch	2064201
Breaking seal, blue, single	1964674

UNI-box medication cassettes



UNI-boxes with handle

Dimensions	Item no.
13 ²⁵ / ₆₄ x 3 ⁵ / ₃₂ x 2 ³ / ₄ inch	2862760
13 ²⁵ / ₆₄ x 4 ²³ / ₃₂ x 2 ³ / ₄ inch	2862758



UNI-boxes with transparant lid

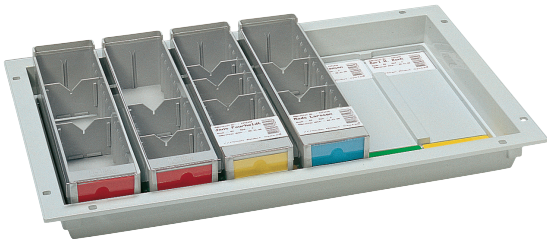
Dimensions	Item no.
13 ²⁵ / ₆₄ x 3 ⁵ / ₃₂ x 2 ³ / ₄ inch	2862760L
13 ²⁵ / ₆₄ x 4 ²³ / ₃₂ x 2 ³ / ₄ inch	2862758L



Partitions for UNI-boxes

Dimensions	Item no.
3 ⁵ / ₃₂ inch, grey	2862762
4 ²³ / ₃₂ inch, blue	2862759

UNI-box stock solutions



M > b

Stands with shelves for UNI-boxes

Dimensions (W x D x H)	Item no.
1 shelf for 6 UNI-Boxes 23 5/8 x 15 3/4 x 5 29/32 inch	4180031
2 shelves for 12 UNI-Boxes 23 5/8 x 15 3/4 x 9 27/32 inch	4180032
3 shelves for 18 UNI-Boxes 23 5/8 x 15 3/4 x 13 25/32 inch	4180033
4 shelves for 24 UNI-Boxes 23 5/8 x 15 3/4 x 17 23/32 inch	4180034

UNI-boxes not included.

M > a b

Full size tray with slots for 6 UNI-boxes

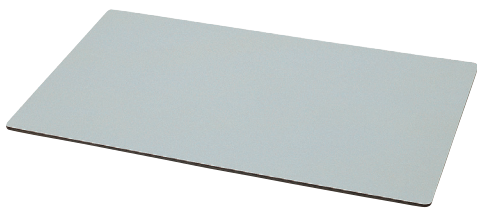
Description	Item no.
Tray 23 5/8 x 15 3/4 x 1 31/32 inch, with slot inlay for 6 pcs. UNI-box 13 25/64 x 3 5/32 x 2 3/4 inch only. UNI-boxes not included.	2862724



Wall suspension rail for UNI-boxes

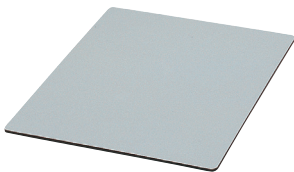
Description	Item no.
23 5/8 inch for 7x 3 5/32 inch or 5x 4 23/32 inch UNI-boxes, powder coated steel, grey, suspended at an angle. UNI-boxes not included.	2862763

Laminate Shelves



Full size, 0 15/64 inch high

Dimensions	Item no.
23 5/8 x 15 3/4 x 0 15/64 inch	2264400



Half size, 0 15/64 inch high

Dimensions	Item no.
11 13/16 x 15 3/4 x 0 15/64 inch	2234400



LAM

Laminate

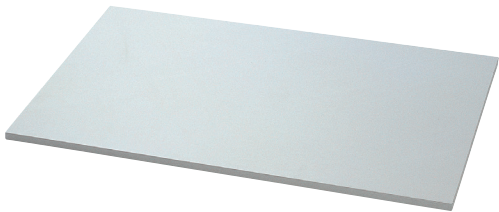
Material Properties:
Sturdy and durable surface,
withstands normal impact influences.

Temperature:
Max. continuous + 302 °F
Max. short-term. + 356 °F

Chemical tolerance:
Limited resistance against weak acid and bases.

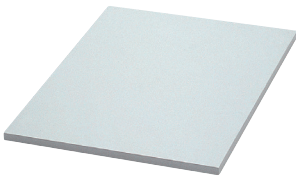
Cleaning:
Wipe clean with damp cloth.

Melamine Shelves



Full size, 0 15/32 inch high

Dimensions	Item no.
23 5/8 x 15 3/4 x 0 15/32 inch	2264403



Half size, 0 15/32 inch high

Dimensions	Item no.
11 13/16 x 15 3/4 x 0 15/32 inch	2234403



MEL

Melamine

Material Properties:

Durable, withstands light impact.

Temperature:

Max. not over + 104 °F

Chemical tolerance:

Limited resistance against weak acid and bases.

Cleaning:

Do not wash in automatic washing machines, wipe off with the most common detergents and disinfectants on the market.

Side Panels and Telescopic Runners

VarioTilt panel



Recently we have added VarioTilt panels from Recycled ABS to the assortment. By utilizing recycled plastics, ScanModul® aims to minimize waste, lower carbon emissions, and conserve natural resources. This transition not only demonstrates our dedication to environmental responsibility but also sets a benchmark for the industry, encouraging other businesses to adopt greener practices.

Conveniently configure your wall panel setup like you wish with either our single wall panels or our pre-configured panel sets.



Top features

- Injection moulded panel for horizontal insert
- Fitted with built-in stop-function
- This panel allows the modules to be pulled out and tilted for better access
- Removable relief wheels can be mounted in the front edge of the panel for safe and easy extension of modules storing heavy products
- Max. load of 44 lbs per insert
- Symmetrical panel: left and right are identical, which allows for convenient installation

a

VarioTilt Panel - single panel

Dimensions - H x D	Item no.
14 ⁴⁹ / ₆₄ x 22 ⁷ / ₁₆ inch	1870020
10 ³ / ₆₄ x 22 ⁷ / ₁₆ inch	1870022
5 ⁴⁵ / ₆₄ x 22 ⁷ / ₁₆ inch	1870021
14 ⁴⁹ / ₆₄ x 22 ⁷ / ₁₆ inch, recycled ABS	1870020R

b

VarioTilt Panel - single panel

Dimensions - H x D	Item no.
14 ⁴⁹ / ₆₄ x 14 ⁹ / ₁₆ inch	1870010
10 ³ / ₆₄ x 14 ⁹ / ₁₆ inch	1870012
5 ⁴⁵ / ₆₄ x 14 ⁹ / ₁₆ inch	1870011

d

VarioTilt Panels for wallcabinet

Dimensions - H x D	Item no.
350 x 10 ⁵ / ₈ inch right	1870041
350 x 10 ⁵ / ₈ inch left	1870042
5 ⁴⁵ / ₆₄ x 10 ⁵ / ₈ inch right	1870045
5 ⁴⁵ / ₆₄ x 10 ⁵ / ₈ inch left	1870046

VarioTilt D Type side panels are split into left and right pieces. Pay attention to always select left and right piece(s) to make up your cabinet configuration.

a

VarioTilt Panel-Set

Dimensions - H x D	Item no.
73 ¹³ / ₁₆ x 22 ⁷ / ₁₆ inch	18S41977
44 ¹⁹ / ₆₄ x 22 ⁷ / ₁₆ inch	18S43907
39 ⁹ / ₁₆ x 22 ⁷ / ₁₆ inch	18S43908
29 ¹⁷ / ₃₂ x 22 ⁷ / ₁₆ inch	18S42907
24 ⁵¹ / ₆₄ x 22 ⁷ / ₁₆ inch	49/18S42908

b

VarioTilt Panel-Set

Dimensions - H x D	Item no.
73 ¹³ / ₁₆ x 14 ⁹ / ₁₆ inch	18S61977
44 ¹⁹ / ₆₄ x 14 ⁹ / ₁₆ inch	18S63907
39 ⁹ / ₁₆ x 14 ⁹ / ₁₆ inch	18S63908
29 ¹⁷ / ₃₂ x 14 ⁹ / ₁₆ inch	18S62907
24 ⁵¹ / ₆₄ x 14 ⁹ / ₁₆ inch	18S62908

d

VarioTilt Panel-Set

Dimensions - H x D	Item no.
20 ¹⁵ / ₃₂ x 10 ⁵ / ₈ inch	18S44908

Accessories for side panels



Safety stop

Description	Item no.
Safety stop, blue. 2 safety stops required per basket or tray.	1961870



Relief wheel

Description	Item no.
Relief wheel, single, blue, for VarioTilt side panels only. 2 relief wheels required per basket or tray.	1869970

Telescopic runners and frames

Description	Depth	Item no.
Telescopic runners (set) for perforated rails, for ISO modules, loadable up to 110 lbs	23 ⁵ / ₈ inch	1867310
Telescopic runners (set) for perforated rails, for ISO modules, loadable up to 110 lbs	15 ³ / ₄ inch	1867303
Telescopic runners (set) for fixed mounting, for ISO modules, loadable up to 110 lbs	23 ⁵ / ₈ inch	1867321
Telescopic runners (set) for fixed mounting, for ISO modules, loadable up to 110 lbs	15 ³ / ₄ inch	1867302
Telescopic runners (set) extendable on both sides for perforated rails	23 ⁵ / ₈ inch	1867298
Telescopic runners (set) for fixed mounting, for cabinet drawer, loadable up to 88 lbs, soft close	23 ⁵ / ₈ inch	78101063670
Telescopic runners (set) for fixed mounting, for cabinet drawer, loadable up to 88 lbs, soft close	15 ³ / ₄ inch	78101063666
Support frame for mounting on telescopic runners	15 ³ / ₄ / 23 ⁵ / ₈ inch	1166060
Pull-out frame for cabinet drawer, A Type, soft close	23 ⁵ / ₈ inch	78101004060/01
Pull-out frame for cabinet drawer, B Type, soft close	15 ³ / ₄ inch	78101006040/01
Pull-out frame for cabinet drawer, D Type, soft close	15 ³ / ₄ inch, halfmodule	78101003040/01
Pull-out frame for cabinet drawer, B Type, soft close	17 ²³ / ₃₂ inch	78101006040/02/S

Set of pull-out frames for cabinet drawers

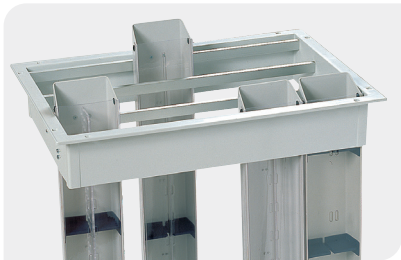
Set incl. telescopic runners, A Type - inner width of cabinet must be 16 ²⁹ / ₆₄ inch	23 ⁵ / ₈ inch	78102004060KIT
Set incl. telescopic runners, B Type - inner width of cabinet must be 24 ²¹ / ₆₄ inch	15 ³ / ₄ inch	78102006040KIT

Perforated rails

Description	Height	Item no.
Perforated rails, stainless steel	74 ⁵¹ / ₆₄ inch	1864653
Perforated rails, stainless steel	61 ¹ / ₃₂ inch	1864654
Perforated rails, stainless steel	35 ⁷ / ₁₆ inch	1864655
Perforated rails, stainless steel	25 ¹⁹ / ₃₂ inch	1864656
Perforated rails, steel galvanized	74 ⁵¹ / ₆₄ inch	1864653/01
Perforated rails, steel galvanized	61 ¹ / ₃₂ inch	1864654/01
Perforated rails, steel galvanized	35 ⁷ / ₁₆ inch	1864655/01
Perforated rails, steel galvanized	25 ¹⁹ / ₃₂ inch	1864656/01
Shelfsupport for perforated rails		49102000

Storage of Catheters

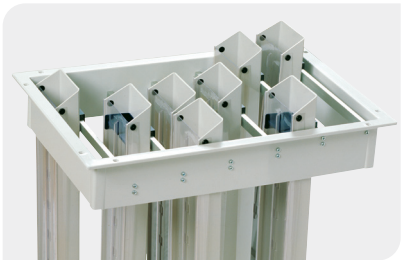
Catheter frames



b

Frame with 4 rails for suspending catheter holders

Dimensions	Item no.
15 3/4 x 23 5/8 inch	1867331

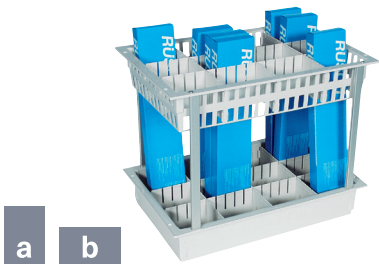


a

Frame with 6 rails for suspending catheter holders

Dimensions	Item no.
23 5/8 x 15 3/4 inch	1867330

Catheter box holder



a b

Catheter box holder in panels for VarioTilt and ScanCell®

Dimensions	Item no.
19 3/32 inch height	1867710A
25 inch height	1867712A
30 29/32 inch height	1867714A
19 3/32 inch height	1867710B
25 inch height	1867712B
30 29/32 inch height	1867714B

Catheter holder

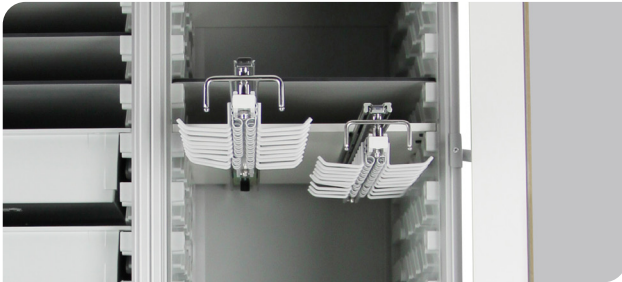


Catheter holder with lid and hook

Dimensions	Item no.
21 21/32 x 4 21/64 x 1 31/32 inch	1867372
33 15/32 x 4 21/64 x 1 31/32 inch	1867373

*Can be mounted onto utility rail on ScanCell.
Utility rail not included.*

Storage of catheters – hanging



Hook pull-out - adjustable single hooks

Description

Hook pull-out for hanging catheter storage with adjustable steel powder coated hooks.
Telescopic runners attached to melamine shelf. Fit into side panels.

Dimensions (W x D)	Hook pull-out	Adj. hooks	Item no.
15 ³ / ₄ x 23 ⁵ / ₈ inch	B Type	1 x 14	1867580
15 ³ / ₄ x 23 ⁵ / ₈ inch	B Type	2 x 14	1867581
15 ³ / ₄ x 23 ⁵ / ₈ inch	B Type	3 x 14	1867582
23 ⁵ / ₈ x 15 ³ / ₄ inch	A Type	1 x 20	1867583
23 ⁵ / ₈ x 15 ³ / ₄ inch	A Type	2 x 20	1867584
Adjustable hook, single piece		1	1867589



Hook pull-out - fixed single hooks

Description

Hook pull-out for hanging catheter storage with fixed stainless steel hooks.
Telescopic runners attached to melamine shelf.
Fit into side panels.

Dimensions (W x D)	Hook pull-out	Fixed hooks	Item no.
15 ³ / ₄ x 23 ⁵ / ₈ inch	B Type	1 x 14	1867590
15 ³ / ₄ x 23 ⁵ / ₈ inch	B Type	2 x 14	1867591
15 ³ / ₄ x 23 ⁵ / ₈ inch	B Type	3 x 14	1867592
23 ⁵ / ₈ x 15 ³ / ₄ inch	A Type	1 x 20	1867593
23 ⁵ / ₈ x 15 ³ / ₄ inch	A Type	2 x 20	1867594



Hook pull-out - adjustable forward facing double hooks

Description

Hook pull-out for hanging catheter storage with adjustable steel powder coated hooks. It provides 2 hook features per adjustable hook, allowing for storage of forward facing catheters.
Telescopic runners attached to melamine shelf. Fit into side panels.

Dimensions (W x D)	Hook pull-out	Adj. hooks	Item no.
15 ³ / ₄ x 23 ⁵ / ₈ inch	B Type	1 x 8	1867580FFH
15 ³ / ₄ x 23 ⁵ / ₈ inch	B Type	2 x 8	1867581FFH
15 ³ / ₄ x 23 ⁵ / ₈ inch	B Type	3 x 8	1867582FFH
23 ⁵ / ₈ x 15 ³ / ₄ inch	A Type	1 x 12	1867583FFH
23 ⁵ / ₈ x 15 ³ / ₄ inch	A Type	2 x 12	1867584FFH
Adjustable hook, single piece		1	1867589/01



www.scanmodul.com/en
info-global@scanmodul.com

www.belintra.us
info-usa@belintra.com