

STATIC STORAGE PRODUCTS

SCANMODUL HEALTHCARE OFFERS THE HIGHEST QUALITY

Our fully customizable solutions and large range of products allow us to meet any individual and demanding storage requirement.

GET ORGANISED AND HAVE A BETTER WORK ENVIRONMENT

ScanMo™ RACKS

ScanMo™ is a flexible modular racking system designed for both angled and horizontal insertion. ScanMo™ racks will free up valuable floor space and reduce the risk of both stock shortages and obsolete products.

All our modules fit into the ScanMo™ Racks. When used in conjunction with our NoCount logistics concept and our SpaceTRAX® supply chain software, even greater savings and efficiencies can be achieved as part of an integrated material management approach.

TOP 5 FEATURES

- Easy adjustable rails
- Angled position of top supports gives easy access to items stored in higher places
- Extended shelves for storing large size packs
- Stops in front and rear ensure safe storage and use of modules
- Customised system allows combination of shelves and modules



THE ScanMo™ CONCEPT

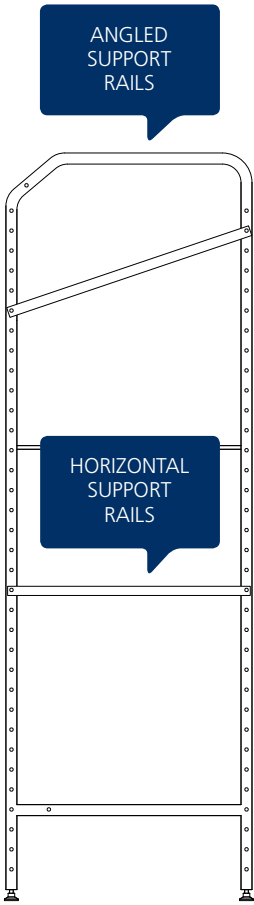
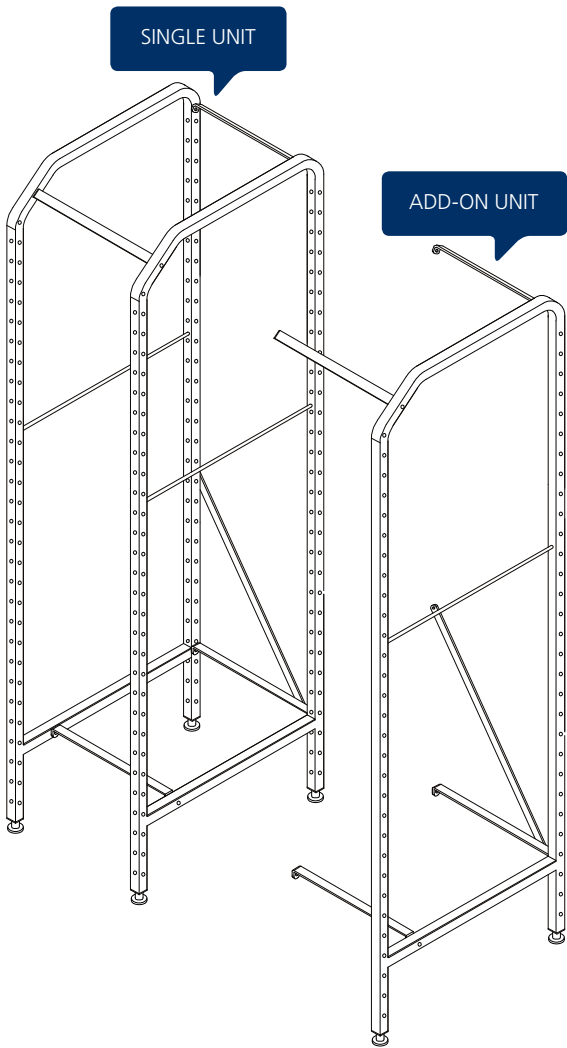
ScanMo™ Racks are made of coated 41mm steel.

Choose between two depths:

- Type A = width 665 mm
- Type B = width 465 mm

You can easily design your own ScanMo Rack with our “unit approach”. Start with a single unit and then choose the desired add-on units to make a complete system that fits your needs. On the following pages we show some examples of ScanMo Rack configurations.

It is possible to customize the ScanMo Racks for odd-size dimensions. Please contact your sales representative for more information and inspiration.



STATIC TYPE A SYSTEM
WITH 2 UNITS FOR BASKETS
AND 1 UNIT FOR SHELVES

TYPE
A



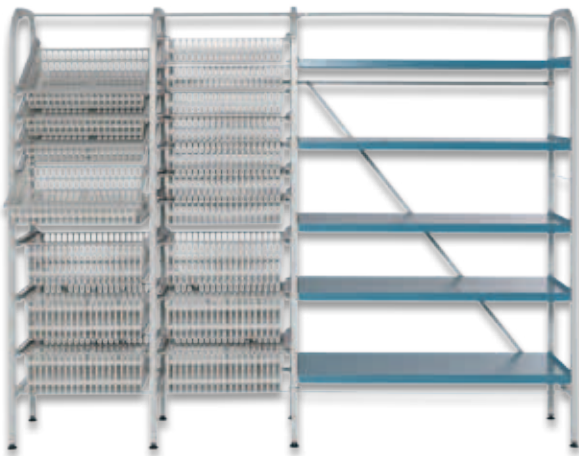
SYSTEM	EXTERNAL DIMENSIONS
Type A	H 2020 x W 1815 x D 665 mm

ITEMS INCLUDED

DESCRIPTION	PCS	HEIGHT	ITEM NO
ABS basket for partitions	12	100 mm	2364251
ABS basket for partitions	6	200 mm	2364252
Coated steel shelves	5		1671620
Single Unit for modules (Type A)	1		CMA-RSM-600
Add-On Unit for modules (Type A)	1		CMA-RAM-600
Add-On unit for shelves (Type A)	1		CMA-RAS-600
Angled support kit (Type A)	4		CMA-RAK-600
Horizontal support kit (Type A)	14		CMA-RHK-600

STATIC TYPE B SYSTEM
WITH 2 UNITS FOR BASKETS
AND 1 UNIT FOR SHELVES

TYPE
B



SYSTEM	EXTERNAL DIMENSIONS
Type B	H 2020 x W 2610 x D 465 mm

ITEMS INCLUDED

DESCRIPTION	PCS	HEIGHT	ITEM NO
ABS basket for partitions	12	100 mm	2364251
ABS basket for partitions	6	200 mm	2364252
Coated steel shelves	5		1671420
Single Unit for modules (Type B)	1		CMB-RSM-400
Add-On Unit for modules (Type B)	1		CMB-RAM-400
Add-On unit for shelves (Type B)	1		CMB-RAS-400
Angled support kit (Type B)			CMB-RAK-400
Horizontal support kit (Type B)	14		CMB-RHK-400

MOBILE TYPE A SYSTEM
WITH 2 UNITS FOR TRAYS
AND BASKETS

TYPE
A



SYSTEM	EXTERNAL DIMENSIONS
Type A	H 2120 x W 930 x D 665 mm

ITEMS INCLUDED

DESCRIPTION	PCS	HEIGHT	ITEM NO
ABS trays	4	100 mm	2064210
ABS basket for partitions	4	200 mm	2364252
ABS trays	2	200 mm	2064220
ABS trays	2	280 mm	2064228
Set of 2 x Ø100 mm swivel wheels. 1 with brakes, 1 without brakes	3		CMW-100
Single Unit for modules (Type A)	1		CMA-RSM-600
Add-On Unit for modules (Type A)	1		CMA-RAM-600
Angled support kit (Type A)	2		CMA-RAK-600
Horizontal support kit (Type A)	10		CMA-RHK-600

MOBILE TYPE B SYSTEM
WITH 1 UNIT FOR TRAYS
AND BASKETS

TYP
B

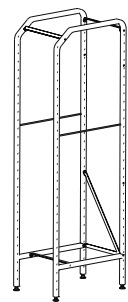


SYSTEM	EXTERNAL DIMENSIONS
Type B	H 2120 x W 675 x D 465 mm

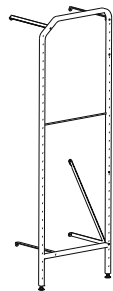
ITEMS INCLUDED

DESCRIPTION	PCS	HEIGHT	ITEM NO
ABS basket for partitions	1	200 mm	2364252
ABS trays	4	100 mm	2064210
ABS tray for partitions	2	50 mm	2064206
ABS trays	2	200 mm	2064220
Set of 2 x Ø100 mm swivel wheels. 1 with brakes, 1 without brakes	2		CMW-100
Single Unit for modules (Type B)	1		CMB-RSM-400
Horizontal support kit (Type B)	9		CMB-RHK-400

TYPE A FOR TRAYS AND BASKETS



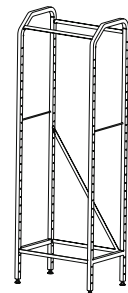
CMA-RSM-600



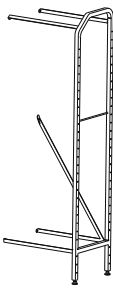
CMA-RAM-600

NAME	DESCRIPTION	HEIGHT	WIDTH	DEPTH	ITEM NO.
Single unit	2 side frames, 1 stabiliser kit	2020 mm	475 mm	665 mm	CMA-RSM-600
Add-on unit	1 side frame, 1 stabiliser kit	2020 mm	455 mm	665 mm	CMA-RAM-600

TYPE B FOR TRAYS AND BASKETS



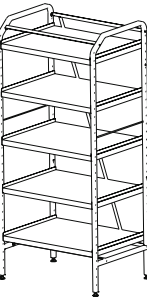
CMB-RSM-400



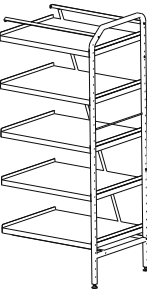
CMB-RAM-400

NAME	DESCRIPTION	HEIGHT	WIDTH	DEPTH	ITEM NO.
Single unit	2 side frames, 1 stabiliser kit	2020 mm	675 mm	465 mm	CMB-RSM-400
Add-on unit	1 side frame, 1 stabiliser kit	2020 mm	645 mm	465 mm	CMB-RAM-400

TYPE A FOR SHELVES



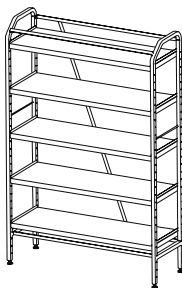
CMA-RSS-600



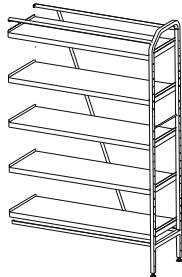
CMA-RAS-600

NAME	DESCRIPTION	HEIGHT	WIDTH	DEPTH	ITEM NO.
Single unit	2 side frames, 1 stabiliser kit	2020 mm	915 mm	665 mm	CMA-RSS-600
Add-on unit	1 side frame, 1 stabiliser kit	2020 mm	885 mm	665 mm	CMA-RAS-600

TYPE B FOR SHELVES



CMB-RSS-400



CMB-RAS-400

NAME	DESCRIPTION	HEIGHT	WIDTH	DEPTH	ITEM NO.
Single unit	2 side frames, 1 stabiliser kit	2020 mm	1320 mm	465 mm	CMB-RSS-400
Add-on unit	1 side frame, 1 stabiliser kit	2020 mm	1290 mm	465 mm	CMB-RAS-400

ACCESSORIES

NAME	DESCRIPTION	HEIGHT	WIDTH	DEPTH	ITEM NO.
ScanMo Rack	Set of 2 x Ø100 mm swivel wheels. 1 with brakes, 1 without brakes				CMW-100
ScanMo Rack	Horizontal support kit Type A 600mm (1 left & 1 right support)				CMA-RHK-600
ScanMo Rack	Horizontal support kit Type B 400mm (1 left & 1 right support)				CMB-RHK-400
ScanMo Rack	Angled support kit Type A 600mm (1 left & 1 right support)				CMA-RAK-600
ScanMo Rack	Angled support kit Type B 400mm (1 left & 1 right support)				CMB-RAK-400
ScanMo Rack	Type A Shelf, coated steel	41	850 mm	660 mm	1671620
ScanMo Rack	Type B Shelf, coated steel	41	1265 mm	445 mm	1671420

INTRODUCTION

MOBILE AND STATIONARY WIRE STORAGE

QuickWire™ is an economical way to solve a variety of storage needs. QuickWire™ delivers easy-access open storage, improved inventory visibility and easy mobility. In addition, the open wire construction promotes air circulation and prevents dust accumulation.

TOP 5 FEATURES

- Maximises floor space
- Quick to assemble
- Easy on your budget
- Wide range of configurations for different needs
- Available as shelving, trolleys and high-density floor track systems

STAINLESS STEEL UTILITY CART 2 SHELVES



We have an extensive range of QuickWire™ products to suit any need for low cost open storage. Our solutions include stationary as well as mobile wire storage.

For more information, please request our leaflet on open wire solutions or search for QuickWire™ on: www.stanleyhealthcare.com

ORDER NUMBER: QWUTL1836SS

Includes 2 utility handles, 2 solid stainless steel shelves, and 4 polyurethane swivel casters, 2 of them with brakes.

WHEELS	EXTERNAL DIMENSIONS
Ø127 mm 4 pcs., swivel	H 991 x W 914 x D 457 mm

MOBILE SHELF UNIT 5 SHELVES



ORDER NUMBER: QWP5136C

457 mm deep. Includes 4 posts, shelf sleeves, 5 wire shelves and 127 mm casters. (2 with locks)

WHEELS	EXTERNAL DIMENSIONS
Ø127 mm 4 pcs., swivel	H 1753 x W 914 x D 457 mm

STATIONARY SHELF UNIT 4 SHELVES



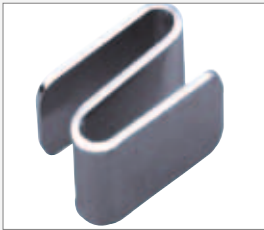
ORDER NUMBER: QWP4147

457 mm deep. Includes 4 chrome posts, shelf sleeves, and 4 chrome wire shelves. (2 with locks)

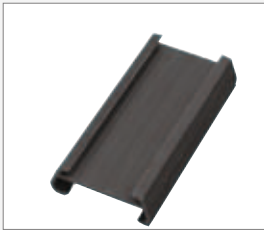
WHEELS	EXTERNAL DIMENSIONS
Ø127 mm 4 pcs., swivel	H 1880 x W 1219 x D 457 mm

For more information please request our leaflet on QuickWire™ solutions on our website to download the PDF: Stanleyhealthcare.com

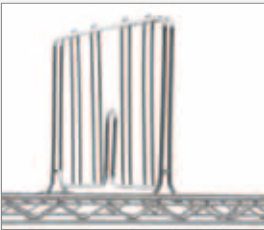
ACCESSORIES - PLEASE ALSO CONSIDER THESE ITEMS



QWSHK12
Add-On S-Hook for use on shelves and baskets.
Pack of 12 hooks.



QWLH3
Shelf Label Holder, quick and easy product identification.



QWSD18
Wire Shelf Dividers,
D 457 mm x H 229 mm



QWSS1836
Stainless steel shelf,
W 914 mm x D 457 mm